

## CV SERIES Check Valve



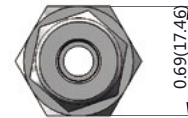
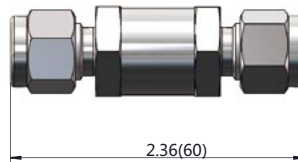
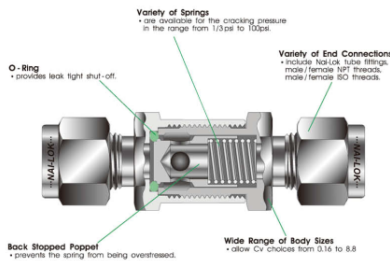
### Features

- Pressure rating up to 3000 psig (207 bar) @ 70°F (21°C)
- Temperature rating up to 375°F (191°C) with standard Viton O-ring
- 316SS body material as standard
- 100% factory tested
- Variety of end connections include NAI-LOK tube fitting, Male/Female NPT & ISO thread.

### Technical Data

Body Material	316 Stainless steel
Working Pressure	3000 psig (207 bar )
Spring	302SS
O-Ring	Viton (standard)
Poppet	316 Stainless steel
End Connections	NAI-LOK tube fitting or NPT thread
Inlet / Outlet Size	1/4" to 1"
Nominal Cracking Pressure	1/3 psig

### Dimensions (mm)



Dimension drawings shown are for reference only.

### Ordering Information

CV	S	N	4	1
BASIC SERIES	MATERIAL	END CONNECTION	SIZE	CRACKING PRESSURE
CV	S - 316 Stainless steel	M- Male NPT N- NAI -LOK F- Female NPT	4 - 1/4 in. 6 - 3/8 in. 8 - 1/2 in. 12 - 3/4 in. 16 - 1 in.	1 - 1/3psi

\* Other end connection sizes please contact factory