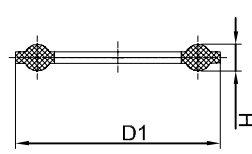


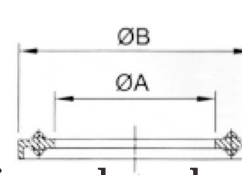
Tri-clamp Plain gasket
Part no:CF24

Size	D1	H
1/2"	20.3	5
3/4"	20.3	5
1"	50.5	5
1 1/2"	50.5	5
2"	64	5.5
2 1/2"	77.5	5.5
3"	91	5.5
3 1/2"	106	5.5
4"	119	5.5
4 1/2"	130	5.5
5"	144.5	5.5
φ 133	155	5.5
6"	167	5.5
φ 159	183	5.5
8"	217.4	5.5
φ 219	233.5	5.5
10"	268	5.5
12"	319	5.5



DIN Tri-clamp gasket
Part no:CF25

Size	D1	H
DN10	34	5
DN15	34	5
DN20	34	5
DN25	50.5	5
DN32	50.5	5
DN40	50.5	5
DN50	64	5.5
DN65	91	5.5
DN80	106	5.5
DN100	119	5.5
DN125	144.5	5.5
DN125	155	5.5
DN150	167	5.5
DN150	183	5.5
DN200	217.4	5.5
DN200	233.5	5.5
DN250	268	5.5
DN300	319	5.5



Lipped gasket 13PG
Part no:CF26

Size	A	B
1.0"	22.8	52.7
1.5"	35.8	52.7
2.0"	48.8	66.2
2.5"	60.5	79.7
3.0"	73.1	93.2
4.0"	97.8	121.2
6.0"	148	169.1
10"	249	270.7
12"	300	321.5



EPDM, Silicone, NBR, PTFE, Viton, Nirtle



seal with screen(60-200mesh)