



FP SERIES

Diaphragm seals with threaded connection

GENERAL TECHNICAL FEATURES

| | |
|----------------------------------------------------|-------------------------------------------------------------------------------------------------------------|
| Installation | direct (type id. "R") |
| | remote (type id. "S") -by flexible capillary - max. length mt.8 |
| Capillary material | AISI 304 with flexible armour of AISI 304 |
| | copper with flexible armour of steel (FP344) |
| Element | diaphragm of AISI 316L st st |
| | on request diaphragms of special materials - PTFE, Monel, Hastelloy C276, titanium tantalum |
| Body (refer to specific models) | upper body of AISI 304 (where scheduled) pressure connection AISI 316L |
| | on request pressure connection of special material - riv. PTFE, Monel, Hastelloy C276, titanium tantalum |
| Filling fluid (refer to specific models) | silicon fluid |
| | on request - diathermic fluid for high temp. - food compatible fluid - fluoride fluid |

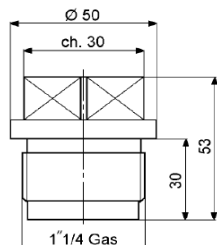
Accuracy class of instruments with diaphragm seal according to working temperature

| Temp.°C | Accuracy class of d.seal | Instrument accuracy class | Final |
|------------|--------------------------|---------------------------|-------|
| +15/+25°C | 0,6 direct fitting | 1 | 1,6 |
| | 1 remote fitting | 1 | 2 |
| +10/+15°C | 1 direct fitting | 1 | 2 |
| +25/+70°C | 1,5 remote fitting | 1 | 2,5 |
| -30/+10°C | 1,5 direct fitting | 1 | 2,5 |
| +70/+150°C | 2 remote fitting | 1 | 3 |
| +150/+250 | 2 direct fitting | 1 | 3 |
| | 3 remote fitting | 1 | 4 |

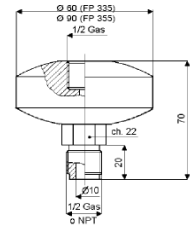
OPTIONS

| | |
|------------------------------------------------------------------------|------------|
| Filling fluid - fluoride fluid | V29 |
| AISI 316L intermediate ring for diaphragm inspection | V62 |
| AISI 316L intermediate ring for diaph.inspect. - double cleaning hole | V70 |
| functional test and calibration certificate for electronic instruments | V94 |
| Calibration between +10 e +15°C (if forseen for the model) | T1 |
| Calibration between +25 e +70°C (if forseen for the model) | T2 |
| Calibration between -30 e +10°C (if forseen for the model) | T3 |
| Calibration between +70 e +150°C (if forseen for the model) | T4 |
| Calibration between +150 e +300°C (if forseen for the model) | T5 |

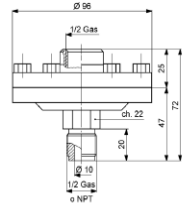
FP 344 Chemical seal for polymer industry
- Element : AISI 304 St St bellows



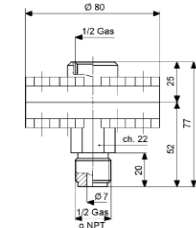
FP 335/355 Diaphragm seal with welded body and diaphragms for general applications



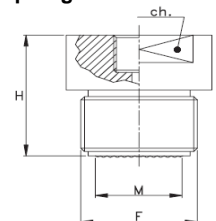
FP 337 Diaphragm seal for specific applications



FP 338 Diaphragm seal suitable for high pressures with removable process connection for inspection



FP 336 Threaded diaphragm seal with welded facing diaphragm



Note

The specifications of the instruments are detailed in our general catalogue also available in our website