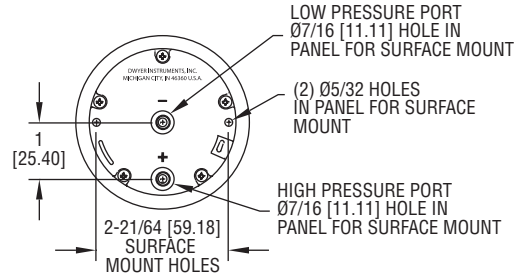
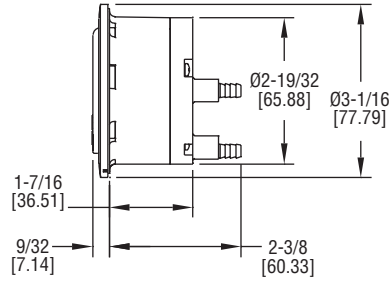


# MINIHELIC® II DIFFERENTIAL PRESSURE GAGES

Combining High Accuracy, Compactness, Dependability, and Low Cost



Combining clean design, small size and low cost with enough accuracy for all but the most demanding applications our **SERIES 2-5000** MiniHelic® II gage offers the latest in design features for a dial type differential pressure gage. It is our most compact gage but is easy to read and can safely operate at total pressures up to 30 psig.

### FEATURES/BENEFITS

- Removable lens and rear-housing provides easy, cost-effective servicing
- Accuracy and value provides an excellent solution for OEM and user applications
- Durable housing materials make it well-suited for rough environments and total high pressure

### APPLICATIONS

- Room positive pressure sensing
- Cabinet air-purging
- Medical respiratory equipment
- Air samplers
- Electronic air cooling systems
- Laminar flow hoods
- Local indication on filter status
- Face velocity on fume hood
- Duct pressures

### SPECIFICATIONS

- Service:** Air and compatible gases.
- Wetted Materials:** Consult factory.
- Housing:** Glass filled nylon; acrylic lens.
- Accuracy:** ±5% of FS at 70°F (21.1°C).
- Pressure Limits:** 30 psig (2.067 bar) continuous to either pressure connection.
- Temperature Limits:** 20 to 120°F (-6.67 to 48.9°C).
- Size:** 2-1/16" (52.39 mm) diameter dial face.
- Mounting Orientation:** Diaphragm in vertical position. Consult factory for other position orientations.
- Process Connections:** Barbed, for 3/16" ID tubing (standard); 1/8" male NPT (optional).
- Weight:** 6 oz (170.1 g).
- Agency Approvals:** Meets the technical requirements of EU Directive 2011/65/EU (RoHS II).
- Caution:** For use only with air or compatible gases.

# MINIHELIC® II DIFFERENTIAL PRESSURE GAGES

Combining High Accuracy, Compactness, Dependability, and Low Cost

**Housing** is molded from strong mineral and glass filled nylon.

**Pointer stops** of molded rubber prevent pointer over-travel without damage.

**Full view lens** is removable and molded of acrylic.

**Aluminum scale** litho-printed black on white, enhances readability.

**Red tipped aluminum pointer**, rigidly mounted to helix is easy to see.

**Wishbone assembly** provides mounting for helix, helix bearings, and pointer shaft.

**Jewel bearings** provide virtually friction-free helix motion.

**Helix** is free to rotate in jewel bearings. It aligns with magnetic field of magnet to transmit pressure indications to pointer.

**Zero adjustment screw**, located behind the removable lens, eliminates tampering.

**Range spring calibration clamp** fixes live length of spring for proper gage calibration and is factory set and sealed.

**Silicone rubber diaphragm** allows accurate response to a broad range of temperatures and at extremely low pressure. Incorporates blow out area for overpressure protection.

**Diaphragm support plates** of lightweight aluminum on each side of the diaphragm minimize position or attitude sensitivity and help define pressure area.

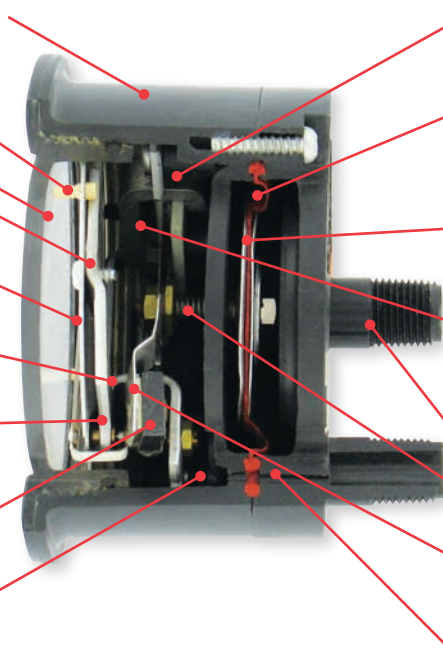
**Flat leaf range spring** reacts to pressure on the diaphragm. Live length is adjustable for calibration. Small amplitude of motion minimizes inaccuracies and assures long life.

**Low pressure tap** connects to rear chamber.

**Coil spring link** provides a resilient connection between the diaphragm and the range spring.

**Ceramic magnet** mounted on a molded bracket at the end of the range spring rotates the helix without direct mechanical linkage.

**High pressure tap** connects with the front chamber through passageway in the plastic case and a sealing ring molded into the edge of the diaphragm.



MODEL CHART			
Model	Range, Inches of Water	Model	Range, MM of Water
2-5000-0	0-0.5	2-5000-25MM	0-25
2-5001	0-1.0	2-5000-50MM	0-50
2-5002	0-2.0	2-5000-100MM	0-100
2-5003	0-3.0		
2-5005	0-5.0		
2-5010	0-10		
2-5020	0-20	2-5000-125PA	0-125
2-5040	0-40	2-5000-250PA	0-250
2-5060	0-60	2-5000-500PA	0-500
2-5100	0-100		
Model	Range, PSI	Model	Range, kPa
2-5205	0-5	2-5000-1KPA	0-1
		2-5000-3KPA	0-3

### ULTERIORI SCALE :

- 2-5200 0-200" w.c.
- 2-5210 0-10 psid
- 2-5215 0-15 psid
- 2-5000-750PA 0-750 Pa
- 2-5000-2KPA 0-2 kPa
- 2-5000-5KPA 0-5 kPa

### SURFACE MOUNTING



Optional surface mounting with back mounting plate allows for quick installation to any surface. Process connections are barbed and point downwards. Add -BB for bottom barbed surface mount option.



-AT targhetta in alluminio (max 2 linee da 9 caratt.)

OPTIONS	
To order add suffix:	Description
-NPT	1/8" male NPT connections
Example: 2-5001-NPT	
-BB	Bottom barbed surface mount
Example: 2-5001-BB	
-NIST	NIST traceable calibration certificate
Example: 2-5001-NIST	
-FC	Factory calibration certificate
Example: 2-5001-FC	

### PANEL MOUNTING



Mounting hardware is supplied with the MiniHelic® II gage for panel mounting through a single hole, 2-5/8" (67 mm) in diameter. Panel thickness up to 1/2" (13 mm) can be accommodated with the hardware supplied. If necessary, surface mounting of the gage can be accomplished by means of two 4-40 screws into the tapped mounting bracket stud holes in the rear of the gage. Surface mounting requires clearance holes in the panel for the two pressure taps.

ACCESSORIES	
Model	Description
A-302F-A	303 SS static pressure tip with mounting flange; for 3/16" ID rubber or plastic tubing; 4" insertion depth; includes mounting screws
A-434	Portable kit
A-489	4" straight static pressure tip with flange
A-497	Surface mounting bracket
A-609	Air filter kit
A-480	Plastic static pressure tip

Process Tubing Options: See page 443 (Gage Tubing Accessories)