



The  
Sampling  
Connection



## MODEL RC-100 REFILLABLE ION EXCHANGE RESIN COLUMN

### *Efficient and Responsive Cation Conductivity Results*

#### *Features*

- Refillable, clear plastic column permits easy resin replacement
- Column design provides optimum fluid velocity with increased resin efficiency
- Designed especially for flow rates common to water chemistry analyzers
- Minimizes lag time required to detect chemical upset
- No PVC used; wetted materials will not leach chlorides or plasticizers
- End fittings are 1/8" quick disconnects

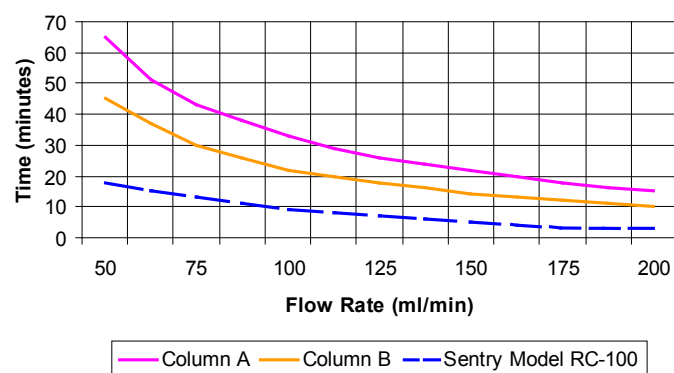
Disponibili anche colonne  
di volume doppio e quadruplo

#### *Description*

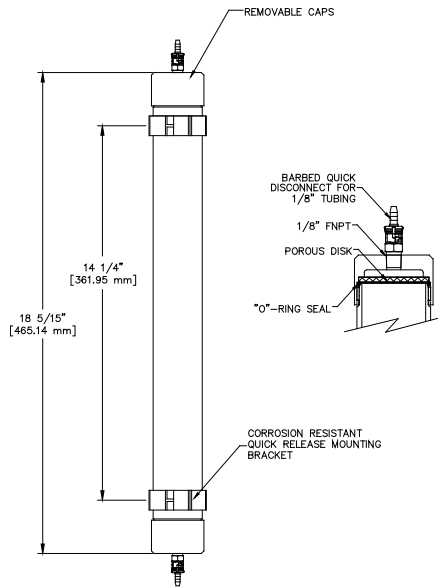
Sentry's refillable ion exchange resin column RC-100 is especially designed to minimize the column's dead volume assuring highly representative sampling. After a chemical upset, Sentry's column can produce a representative sample (at a flow rate of 200 cc/min) within 4 minutes while others can take up to 16 minutes.

In addition to reducing dead volume, the Sentry refillable ion exchange column's design also produces better flow distribution. Poor flow distribution and velocity can skew cation conductivity results by up to 0.1 uS/cm. The Sentry design minimizes channeling and achieves a higher resin efficiency than competitive columns with inefficient column diameters.

**Time Response vs. Flow rate**



## RESIN COLUMN TECHNICAL DATA



### SPECIFICATIONS

Operating Temperature .....	180°F (82°C) maximum
Operating Pressure .....	100 psig @ 100°F (7 barg @ 38°C) 60 psig @ 180°F* (4 barg @ 82°C)
Cation Capacity .....	1000 grains as CaCO <sub>3</sub>
Resin Volume .....	0.020 ft <sup>3</sup> (565 cc)
Flow .....	200 cc/min recommended; 500 cc/min maximum
Resin .....	Cation resin with color-indicating dye, other resin types available
Shipping Weight .....	column + resin: 2.4 lbs. (1.1 kg)
Wetted Materials .....	Polycarbonate, Polypropylene, Delrin®

\*Design safety factor is 2-1/2 times this rate.

### PART NUMBERS

Model RC-100 Resin Column with initial charge of resin, mounting brackets and two sets of quick disconnects .....	7-00816B
Spare Part: Cation Resin Refill Bag .....	2-03972A
Corrosion Proof, Quick Disconnect Mounting Bracket .....	4-04869A
Porous Disk .....	2-03892A
O-Ring Seal .....	4-04820C
Delrin® Barbed Quick Disconnects (includes two each male and female coupling), (Stainless Steel fittings available on request) .....	6-02503B

**▲WARNING**

It is solely the responsibility of the end-user, through its own analysis and testing, to select products and materials suitable for their specific application requirements, ensure they are properly installed, safely applied, properly maintained, and limit their use to their intended purpose. Improper selection, installation, or use may result in personal injury or property damage.



**SENTRY EQUIPMENT CORP**

PO Box 127  
Oconomowoc, WI 53066 USA  
Phone: 262-567-7256  
Fax: 262-567-4523

**E-mail:**  
sales@sentry-equip.com

**Website:**  
www.sentry-equip.com

*The Sampling Connection*

For further information, contact:

***Rometec srl***

Via Alessandro Minuziano, 87 - 89  
00128 - Roma  
Tel 06-5061635 Fax 065061542  
P.Iva 0412062100  
**www.rometec.it**